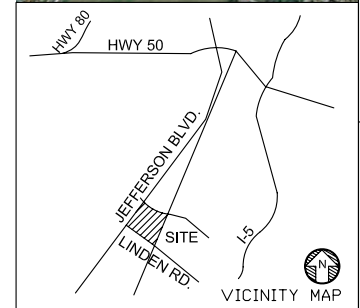
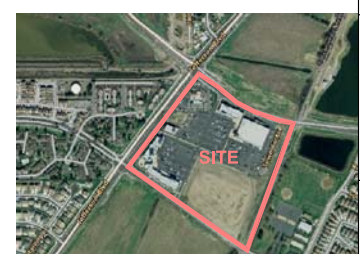


TENANT LEGEND

SUITE	TENANT	SF
B100	BLOCKBUSTER	6000 sf
B110	HANS CLEANERS	2098 sf
B120	DR. DANG DDS.	1625 sf
B130	GNC	975 sf
B140	LUXURY NAILS	1300 sf
B150	SHORTY PQ'S	1300 sf
B160	CURVES	1300 sf
B170	SALON	1300 sf
E110	QDOBA	2394 sf
E120	T MOBILE	2701 sf
E130	FEDEX KINKOS	2006 sf
E140	JUICE	1150 sf
E150	SUPERCUTS	1150 sf
E160	SUBWAY	1150 sf
E170	YOGI YOGURT	1151 sf
E180	HULA HAWAIIAN BBQ	1500 sf
E190	STARBUCKS	1500 sf
F100	SAFE CU	4800 sf
F120	LYON REAL ESTATE	4000 sf
F130		3302 sf
F140	SCRAPBOOK ADDICT	2000 sf
F150		2442 sf
F160		2224 sf
F170	EAST SIDE CHEF	2828 sf
F180	ROUND TABLE PIZZA	3745 sf
G110		2200 sf
G120		1100 sf
G130		825 sf
G140		825 sf
G150		1100 sf
G160		1100 sf
G170		2475 sf
MAJOR A	NUGGET MARKET	51,798 sf
MAJOR B	TARGET	137,778 sf
PAD C	BANK OF AMERICA	5400 sf
PAD D	WELLS FARGO	5500 sf

TARGET
 MAJOR B
 2005 TOWN CENTER PLAZA
 WEST SACRAMENTO, CA 95691
 137,778 SF (PROPOSED)
 NOT A PART



TOTAL BUILDING SF:	265,726 SF
	(INCL. N.A.P.)
PARKING PROVIDED:	1321 STALLS
PARKING RATIO:	4.97/1000 SF
	(INCL. N.A.P.)
TRAFFIC COUNT:	29,472 ADT (2006)
DEMOGRAPHICS	1 MILES 3 MILES 5 MILES
2007 EST. POP.	7,657 91,175 251,027
2012 PROJ. POP.	10,455 102,042 272,127
AVG. HH. INCOME	76,984 59,784 59,570

DISCLAIMER: THIS PLAN IS PROVIDED SUBJECT TO (i) ERRORS AND OMISSIONS IN THE INFORMATION AND (ii) MODIFICATION WITHOUT NOTICE. THE INFORMATION, SPECIFICATIONS, DIMENSIONS AND/OR TABULATIONS SET FORTH IN THIS PLAN HAVE BEEN DERIVED FROM DOCUMENTS BELIEVED TO BE RELIABLE. HOWEVER, THIS PLAN MAY BE INCOMPLETE AND/OR INACCURATE. NO REPRESENTATION OR WARRANTY, EXPRESSED OR IMPLIED AS TO THE ACCURACY OR ADEQUACY REGARDING SUCH INFORMATION IS MADE BY THE OWNER OF THE PROJECT, PROPERTY MANAGER OR ANY OTHER REPECTIVE PARTNERS, DIRECTORS, OFFICERS, EMPLOYEES AND AGENTS. NONE OF THE FOREGOING PARTIES SHALL HAVE ANY LIABILITY FOR SUCH ERRORS, OMISSIONS, INCOMPLETENESS OR INACCURACIES. ANY PERSON OR ENTITY REVIEWING THIS PLAN SHOULD MAKE THEIR OWN INDEPENDENT INVESTIGATION OF THE INFORMATION CONTAINED HEREIN.

SOUTHPORT TOWN CENTER
 2005-2155 TOWN CENTER PLAZA WEST SACRAMENTO, CA 95691
SITE LEASE PLAN

WATT COMPANIES
 2716 OCEAN PARK BOULEVARD
 SANTA MONICA, CA 90405
 T. 310.314.2430

SCALE: 0' 65' 130'
 May. 1, 09

S
 SHEET 1 OF 1