

# SADIE LANE SHOPPING CENTER

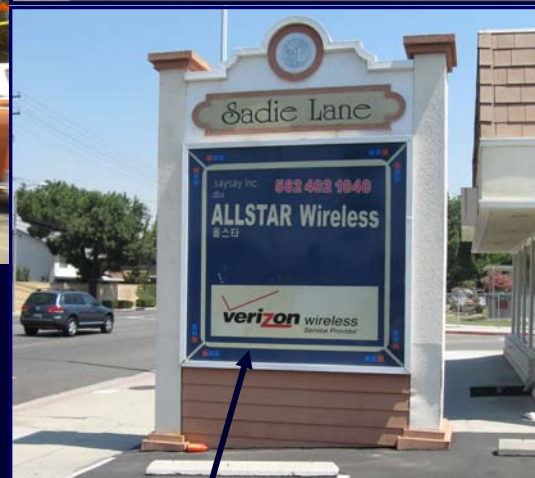
Artesia Blvd. & Norwalk Blvd.  
Artesia, CA 90701



**KARIN GILBERT**  
LEASING COORDINATOR  
310.314.2466  
CA DRE LIC. #01857327  
kgilbert@wattcompanies.com

**STACY AGUIRRE**  
LEASING MANAGER  
310.314.2579  
CA DRE LIC. # 01841375  
saguirre@wattcompanies.com

**WATT COMPANIES**  
2716 OCEAN PARK BLVD, STE 3040  
SANTA MONICA, CA 90405  
310.314.2430  
CA DRE LIC. #01228703  
www.wattcompanies.com



**Dedicated Monument Sign -  
Your Logo Here!**



Join the following retailers at  
this intersection:





# SADIE LANE SHOPPING CENTER • 12230-12236 ARTESIA BLVD. ARTESIA, CA 90701

### AVAILABILITY:

SUITE 2 1,730 SF

SUITE 12 1,200 SF

### PROPERTY HIGHLIGHTS:

- Located at the busy retail intersection of Norwalk & Artesia
- Close proximity to 91, 605 and 5 Freeways
- Low start-up rents, flexible lease terms
- Dense trade area with high incomes



DEMOGRAPHIC HIGHLIGHTS:	1 MILE	3 MILES	5 MILES
POPULATION	28,666	224,083	640,901
AVG HH INCOME	\$86,840	\$82,954	\$78,662
TRAFFIC COUNTS	81,000 ADT	SOURCE: City of Cerritos, 2008	

Join the following retailers at this intersection:

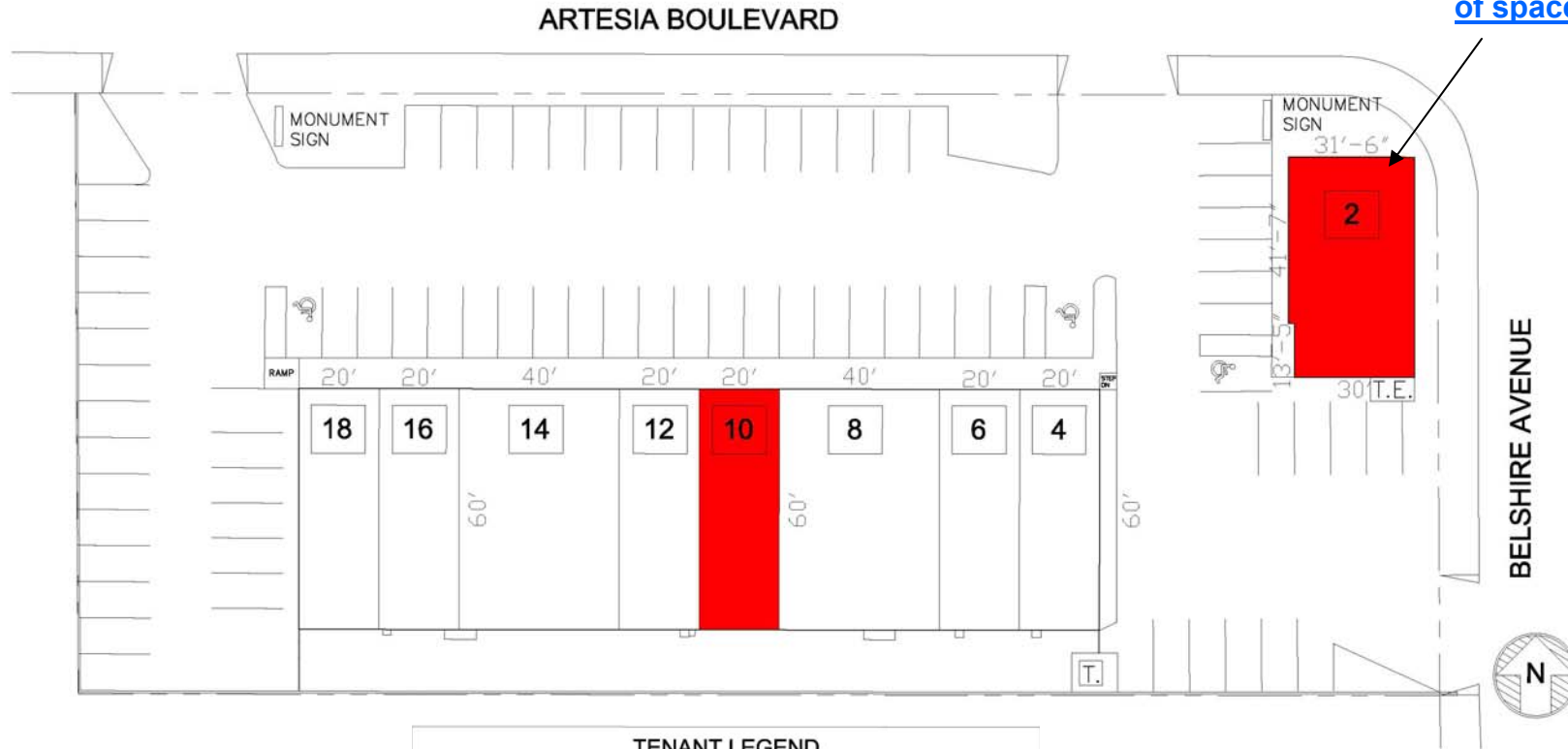


# SADIE LANE SHOPPING CENTER

Artesia Blvd. & Norwalk Blvd.

Artesia, CA 90701

[Click here for video tour of space](#)

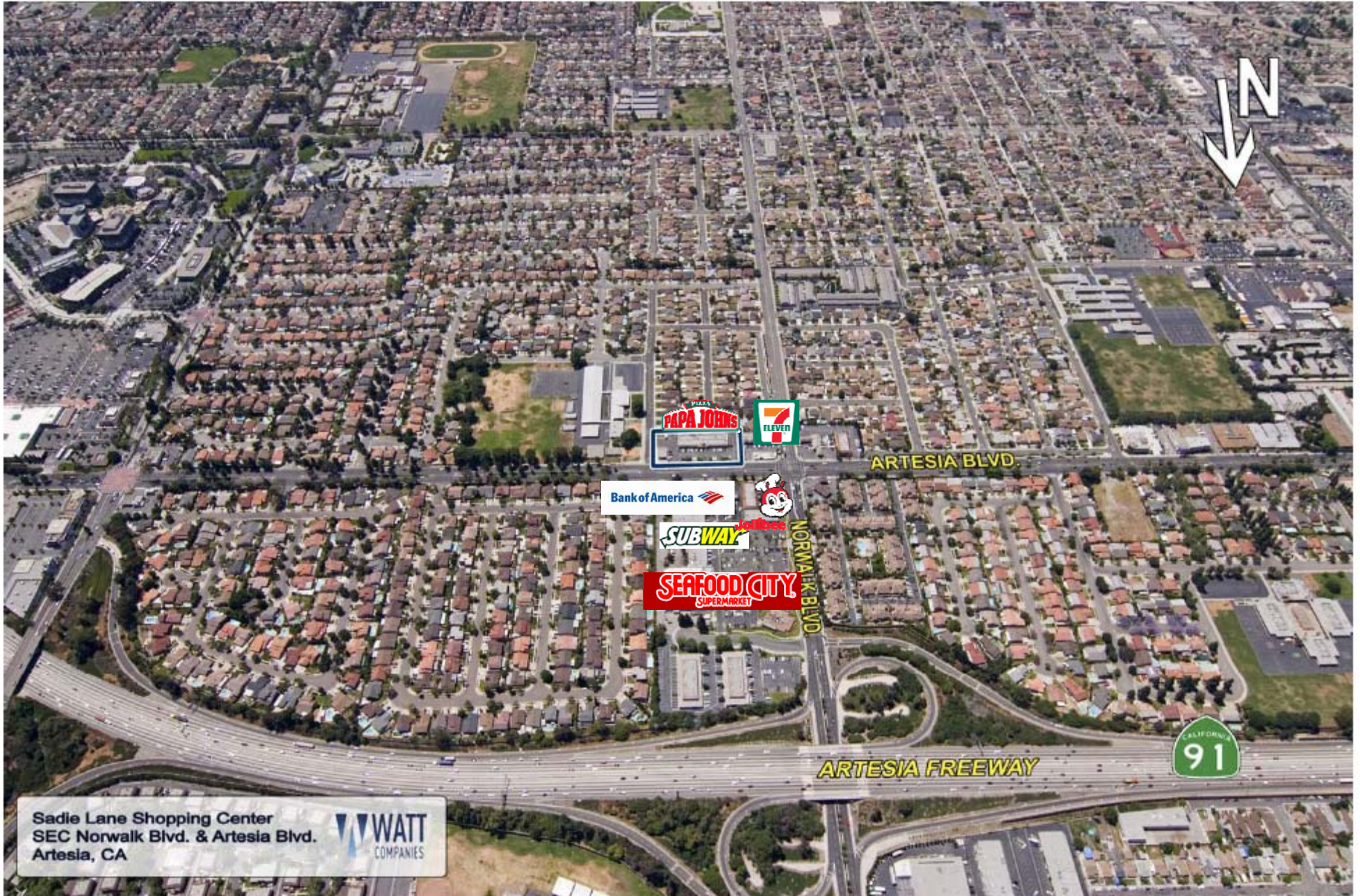


TENANT LEGEND		
SUITE	TENANT	SF
2	AVAILABLE	1730 sf
4	LOVE LETTER CHICKEN	1200 sf
6	PASSO HAIR	1200 sf
8	NANAY GLORIA'S RESTAURANT	2400 sf
10	AVAILABLE	1200 sf
12	ANGEL OUANO DDS	1200 sf
14	VILLAGE LIQUOR	2400 sf
16	DETAIL ESCROW	1200 sf
18	PAPA JOHN'S PIZZA	1200 sf

# SADIE LANE SHOPPING CENTER

Artesia Blvd. & Norwalk Blvd.

Artesia, CA 90701



Sadie Lane Shopping Center  
SEC Norwalk Blvd. & Artesia Blvd.  
Artesia, CA

