

ANAHEIM TOWNE CENTER

SWC LINCOLN AVENUE & ANAHEIM BOULEVARD | ANAHEIM, CALIFORNIA

Available Space:

1,380sf

1,920sf

For leasing information, contact:

Stacy Aguirre
(310) 314-2579
saguirre@wattcompanies.com

Watt Companies, Inc.

2716 Ocean Park Blvd.

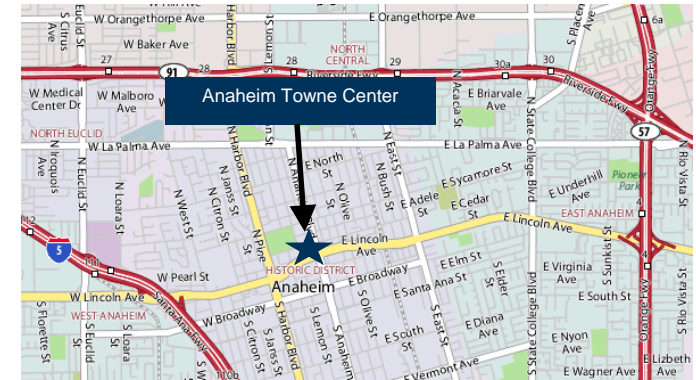
#3040

Santa Monica, CA 90405

(888) 310-WATT

(310) 314-2430

www.wattcompanies.com



PROPERTY DETAILS:

- Busy neighborhood center in the heart of downtown
- Across from City Hall and Anaheim Promenade
- Close proximity to 10 and 91 Freeways

DEMOGRAPHIC HIGHLIGHTS:

Estimates	1 Mile	3 Miles	5 Miles
Population	43,193	254,705	617,108
Average Household Income	\$61,084	\$62,798	\$71,384

Source: Claritas 2009

TRAFFIC COUNTS:

Intersection	Cars Per Day
Lincoln & Anaheim	42,000

Source: City of Anaheim, 2008

Owned and Managed by:

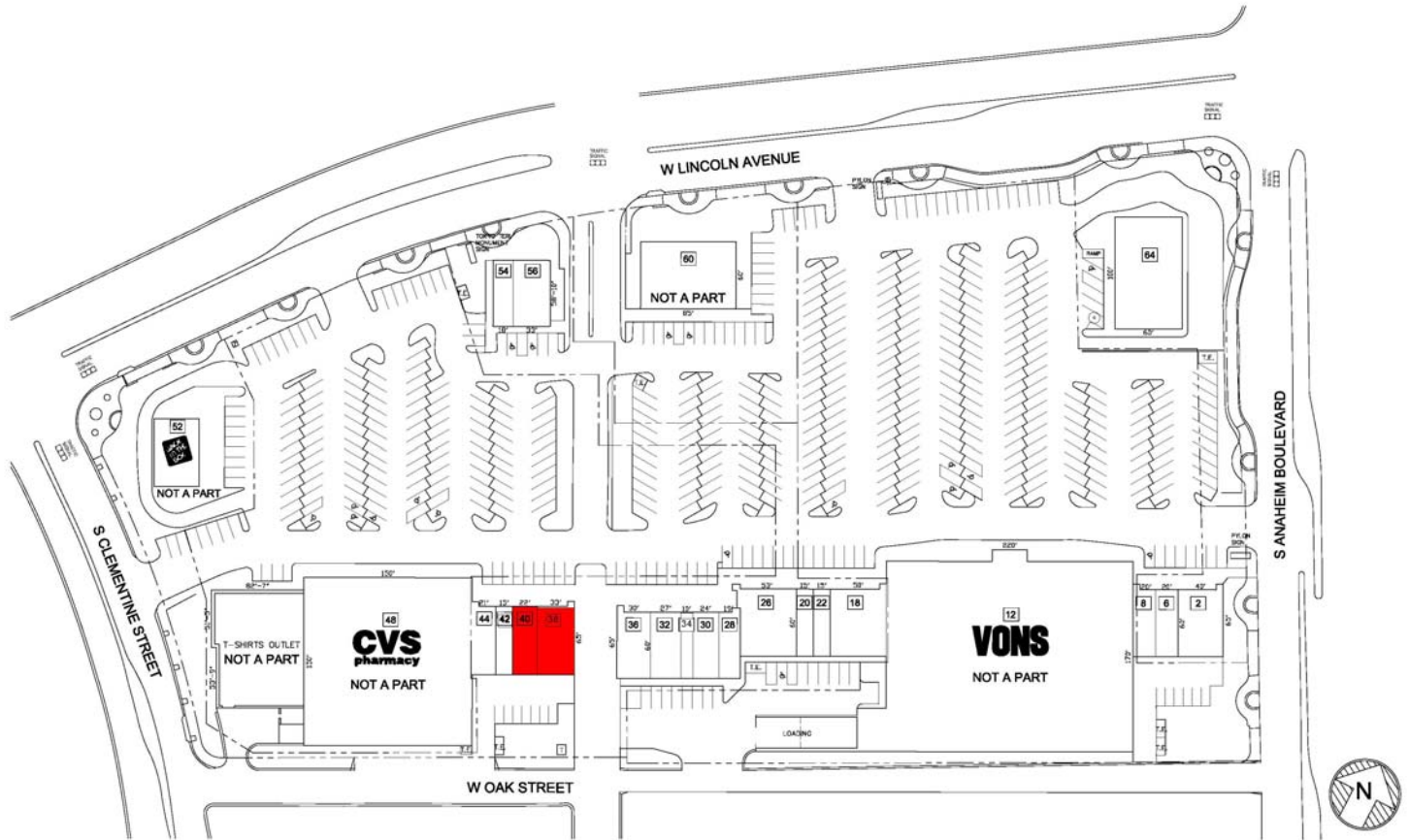


ANAHEIM TOWNE CENTER

SWC LINCOLN AVENUE & ANAHEIM BOULEVARD | ANAHEIM, CALIFORNIA



TENANT LEGEND		
SUITE	TENANT	SF
2	STARBUCKS	2380 sf
6	SUBWAY	1200 sf
8	JAX DONUTS	1200 sf
12	VONS	38,700 sf
18	SUNSHINE FASHIONS	3000 sf
20	QUEEN NAILS	900 sf
22	ANAHEIM CASH CO.	900 sf
26	FILIPINA'S GRILL	3000 sf
28	PERFECT CUTS	1200 sf
30	CHINESE WALL	1500 sf
32	UPS STORE	1500 sf
34	CIGAR HOUSE	600 sf
36	BAJA CALIFORNIA	1800 sf
38	AVAILABLE	1020 sf
40	AVAILABLE	1380 sf
42	DOLLAR +	900 sf
44	ANAHEIM DENTISTRY	1200 sf
48	CVS	21,360 sf
52	JACK IN THE BOX	2500 sf
54	TOKYO TERIYAKI	1020 sf
56	PAPA JOHN'S PIZZA	1980 sf
60	CALIFORNIA FEDERAL	10,000 sf
64	US BANK	6000 sf



For leasing information, contact:

Stacy Aguirre
 (310) 314-2579
 saguirre@wattcompanies.com

Watt Companies, Inc.
 2716 Ocean Park Blvd.
 #3040
 Santa Monica, CA 90405

(888) 310-WATT
 (310) 314-2430
 www.wattcompanies.com

JOIN THESE RETAILERS:



Owned and Managed by:



The information herein has been secured from sources we believe to be reliable; however, Watt Companies makes no guarantees, warranties or representations as to the completeness or accuracy thereof. The presentation of this property is submitted subject to errors, omissions, changes of price or conditions prior to the sale or lease, or withdrawal without notice.